

OmniSEC SOFTWARE: v5.12 (CPS0038-42) SOFTWARE UPDATE NOTIFICATION

Introduction

This document details the release of the OmniSEC software package version 5.12 (CPS0038-42). This release is a maintenance release which contains no new features but confirms functionality of the software using Windows 10. It covers software issues fixed and new features introduced. This information is required to perform a risk analysis to determine if the software should be installed. In this risk analysis the benefits of the new features provided and resolved software issues must be weighed against the risk of new issues that may be introduced to vital areas of the software or possible changes to the results of future analysis. Installation instructions are provided.

Installation

It is assumed that you have authority to install or update software within your facility. It is also assumed that you have Administrator rights for the system upon which the software is installed, as this is a requirement of the installation process. If you do not have this authority, please consult with your I.T. support department before proceeding.

Minimum System Requirements

Intel Dual Core or hyper threaded processor, 2GB RAM, 150MB free hard disk space, 1024 x 768 screen resolution running in 16 bit color mode, CD-ROM drive, up to 3 serial ports and 1 free USB port depending on hardware configuration, Windows XP Pro (SP3 or later) operating system.

Recommended System Requirements

The recommended computer system requirements for running this software are highlighted in table 1 below.

Table 1: Recommended system requirements for the OmniSEC v5.12 software.

| Feature | Specification |
|--------------------------|---|
| Processor Type | Intel Core 2 Duo, |
| Memory | 2 GB RAM |
| Hard Disk Storage | 160 GB free hard disk space, |
| Additional Storage Media | CD-ROM drive, |
| Display Resolution | 1024 x 768 running in 32 bit color mode, |
| Connectivity | 3 serial ports and 1 free USB port depending on hardware configuration, |
| Operating System | Windows 7 or 10 64 bit Professional operating system. |

Supported operating systems and hardware configurations

OmniSEC software v5.12 is compatible with Windows XP Pro (SP3), Windows 7 or 10. Only 64 bit Professional versions are supported.

Windows Vista, and Windows 8 are not supported.

Windows XP and Windows 7 64 bit are compatible with all Viscotek hardware configurations.

Windows 10 is compatible with the Viscotek TDA305 and the SEC-MALS only. No other hardware configurations or legacy systems have not been tested so it should be assumed that they are not compatible. The Zetasizer μ V is known to not be compatible with the Windows 10 operating system (See installation instructions below).

Supported Languages

- English

Installation Instructions

Windows XP

It is recommended that older versions of OmniSEC be uninstalled before version 5.12 is installed. This should be done following the uninstall procedure below. Double-click on the OmniSEC installer and follow the on-screen instructions. When the Zetasizer μ V is connected, the USB driver will be installed and the following message will appear twice:



Figure 1: Windows XP driver installation error message

This warning can safely be ignored as the software installation has been fully tested on Windows XP. If this warning is encountered, the button 'Continue Anyway' should be selected.

Windows 7 64 bit Professional

It is recommended that older versions of OmniSEC be uninstalled before version 5.12 is installed. This should be done following the uninstall procedure below. Double-click on the OmniSEC installer and follow the on-screen instructions. When the Zetasizer μ V is connected, the USB driver will be installed and the following message may appear twice:



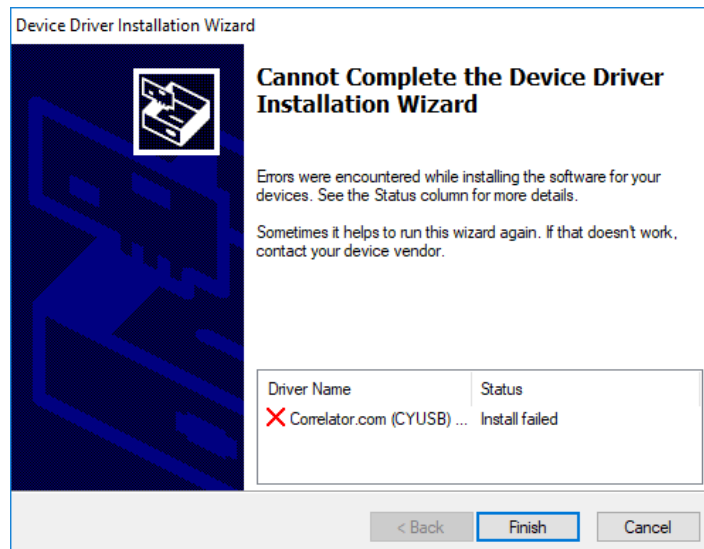
Figure 2: Windows 7 driver installation error message

This warning can safely be ignored as the software installation has been fully tested on Windows 7. If this warning is encountered, 'Install this driver software anyway' should be selected.

Windows 10 64 bit Professional

It is recommended that older versions of OmniSEC be uninstalled before version 5.12 is installed. This should be done following the uninstall procedure below. Double-click on the OmniSEC installer and follow the on-screen instructions.

During installation the following error message will appear:



When this warning is encountered, 'Finish' should be selected. The device driver 'correlator.com' is required for use of the Zetasizer μ V with OmniSEC. As the driver will not install the Zetasizer μ V cannot be used with Windows 10.

Connecting the Zetasizer to a PC – Windows XP and 7 only

With the software installed the instrument should be connected via the USB port, and the system switched on. The Found New Hardware Wizard should open to install the drivers for the Zetasizer μ V. The name used to identify the hardware will be "Malvern Zetasizer". This should be left with the default selection of 'Install the software automatically' and the 'Next' button should be selected so that file transfer begins. Once file transfer has completed the 'Finish' button should be selected to complete the installation. You may see the same security warnings as described in the previous section. The warning can safely be ignored as the software installation has been tested on Windows XP and Windows 7. If the warning is encountered the 'Continue Anyway' or 'Install this driver anyway' option should be selected. Windows will indicate that the new hardware is installed and ready to use.

Uninstall Procedure

The software can be uninstalled using the standard 'Add/Remove Programs' feature in the Windows XP, using the 'Programs and Features' section of the Windows 7 'Control Panel' or the 'Apps' section of Windows 10 'Settings'.

New Features

There are no new features in this software release.

Fixed issues

There are no new fixed features in this software release.

Known Issues

The following software bugs have been discovered within the software and will be investigated as part of a future release. Please follow the suggested work-around.

Table 4: Known issues in OMNISEC v5.12 software.

| Reference | Issue | Workaround |
|-----------|---|---|
| N/A | The correlator.com drivers do not install when running on Windows 10 | Use Windows XP or 7 if the Zetasizer μ V is part of the hardware configuration. |
| Bug 37192 | Result certification does not work. This feature was disabled in version 4.7. | Do not upgrade the software beyond version 4.6 if this feature is required. |
| Bug 36913 | If results including a MALS detector are processed for conventional calibration, a baseline must still be set on the MALS detector channel. | Set a baseline on the MALS channel |
| Bug 36904 | The calculated concentration when running a copolymer analysis will be reported as the input concentration unless the input concentration is set to zero, in which case, the calculated value is reported correctly | Set the input concentration to zero for copolymer sample analysis |
| Bug 37004 | In the report designer, Rg(z) is incorrectly reported as zero. | There is currently no workaround for this bug |
| Bug 36918 | In the report designer, if two detector channel line styles are modified at the same time, only one of them will be refreshed in the image | Modify one channel at a time |
| N/A | If the GPCmax is not connected to COM1 or one of the ports on the 6-way multi-COM port and the GPCmax toolpad is opened, the software can crash to windows with no error message. | THE GPCmax must be connected to COM1 or one of the ports on the 6-way multi-COM serial-to-USB converter. |
| N/A | False positives on the vapor sensor can occur if the threshold in the SEC-MALS settings is set too low. | The threshold should be set to a high enough level that false positives do not occur. The default value is 3000 |
| N/A | When running the Zetasizer μ V with a computer on windows XP and certain processors, if the PC is shutdown, it will not shutdown but re-start. | The Zetasizer μ V should be turned off before the PC is shutdown. |
| N/A | MALS data from v5.00 re-calculated with all later versions of the software, otherwise the results will be incorrect. | Any MALS data collected will need to be re-calibrated and re-calculated to obtain the correct answer. |
| N/A | Question marks replace some characters in the Model/Fit view if the system is running Chinese language settings | There is currently no workaround for this bug |

MALVERN PANALYTICAL

Groewood Road, Malvern,
Worcestershire, WR14 1XZ, UK

Lelyweg 1, 7602 EA Almelo,
Netherlands
P.O.Box 13, 7600 AA Almelo,
Netherlands

Tel: +44 1684 892456
Fax: +44 1684 892789

Tel: +33 546 534 444
Fax: +33 54 534 598

info@malvernpanalytical.com
www.malvernpanalytical.com

Disclaimer: Although diligent care has been used to ensure that the information in this material is accurate, nothing herein can be construed to imply any representation or warranty as to the accuracy, correctness or completeness of this information and we shall not be liable for errors contained herein or for damages in connection with the use of this material. Malvern Panalytical reserves the right to change the content in this material at any time without notice. Copyright: © 2018 Malvern Panalytical. This publication or any portion thereof may not be copied or transmitted without our express written permission.