

NS XPLORER SOFTWARE: v1.0.0 (PSS0058-01)

SOFTWARE UPDATE NOTIFICATION

Introduction

This document details the release of software PSS0058: v1.0.0 of the NanoSight NS XPLORER software for the NanoSight Pro system. Installation instructions are provided.

Installation

It is assumed that you have authority to install or update software within your facility. It is also assumed that you have Administrator rights for the system upon which the software is installed, as this is a requirement of the installation process. If you do not have this authority, please consult with your I.T. support department before proceeding.

Compatibility

The NS XPLORER software is compatible with the NanoSight Pro instrument and Windows 10® 64-bit or Windows 11® 64-bit only.



NanoSight Instruments LM10, NS300, NS500 and operating systems Windows XP®, Windows Vista®, Windows 7® and Windows 8® are not supported.

Recommended System Requirements

The recommended computer system requirements for running this software are highlighted in table 1 below.

Feature	Specification
Graphics Card	AMD™, Intel™ UHD or Nvidia™ Graphics (Direct X 12, Open GL 4, Open CL 3)
Processor Type	8 th Gen+ Intel Core i7™ Processor (or equivalent)
Memory	16 GB RAM
Hard Disk Storage	512GB Solid State Drive (SATA or NVMe) 1TB Hard Drive (for data storage)
Power Supply	500W minimum
Display Resolution	1920 x 1080 full HD screen resolution running in 16-bit color mode
Connectivity	3x free USB ports (at least one USB 3.0)
Operating System	Windows 10® 64-bit - minimum release 20H1 Windows 11® 64-bit

Table 1: Recommended system requirements

Supported operating systems

NS XPLOER software is compatible with all versions of Windows 10® and Windows 11®. Only 64-bit versions are supported.

Windows XP®, Windows Vista®, and Windows 7® and Windows 8® are not supported.

Supported Languages

- English

Installation Instructions

Before use, the PC operating system must be configured. Please see **Appendix 1** for further information.

The software suite is available on the instrument or as a web download. The downloaded extractor contains the NS XPLOER Setup and License Manager Setup files. License Manager is a prerequisite of NS XPLOER.

Locating the software on the instrument

The software suite is provided on a permanent internal USB by default.

To locate the software installer, open File Explorer in Windows and navigate to the drive labelled 'NS XPLOER'

Installation

Double click on the NS XPLOER install file. A Windows® User Account Control popup is displayed

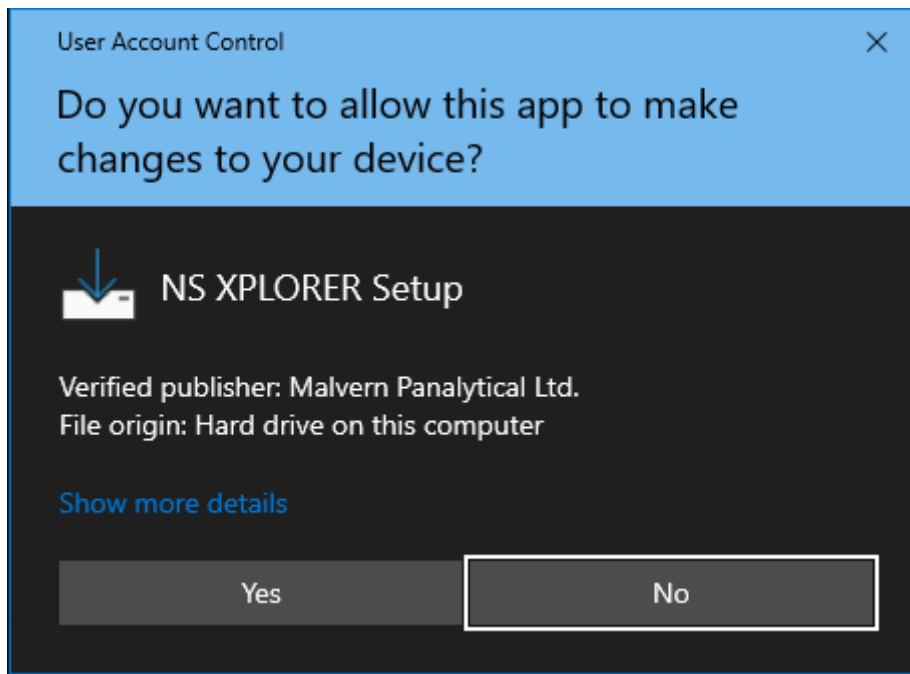


Figure 1: User Account Control

Select Yes button and the NS XPLOER wizard opens

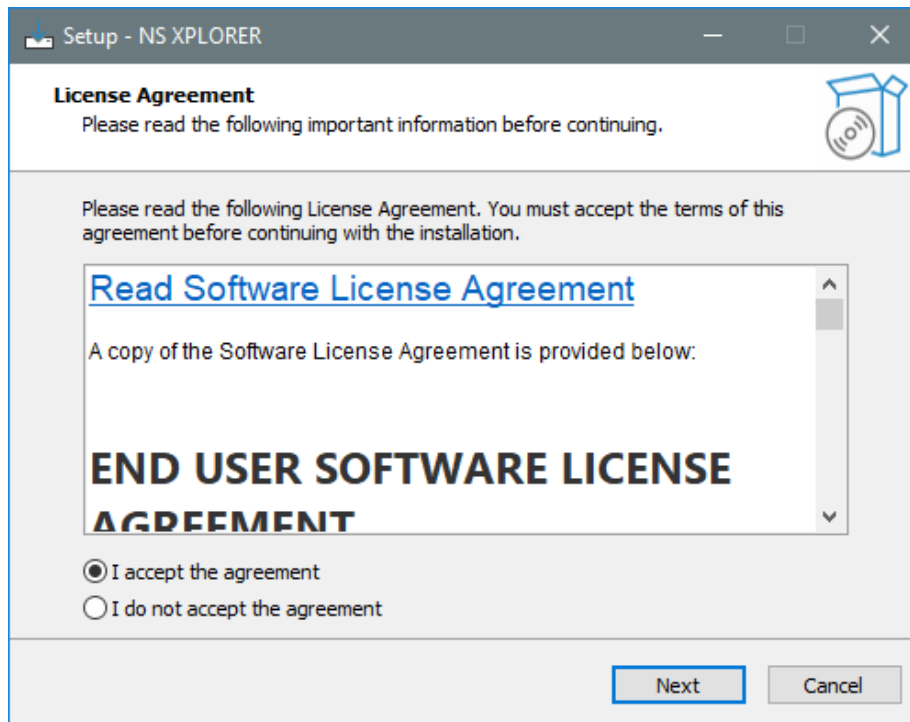


Figure 2: License agreement

Select the box next to “I accept the terms in the License Agreement” then select Next
Choose to have desktop shortcut or not and select Next

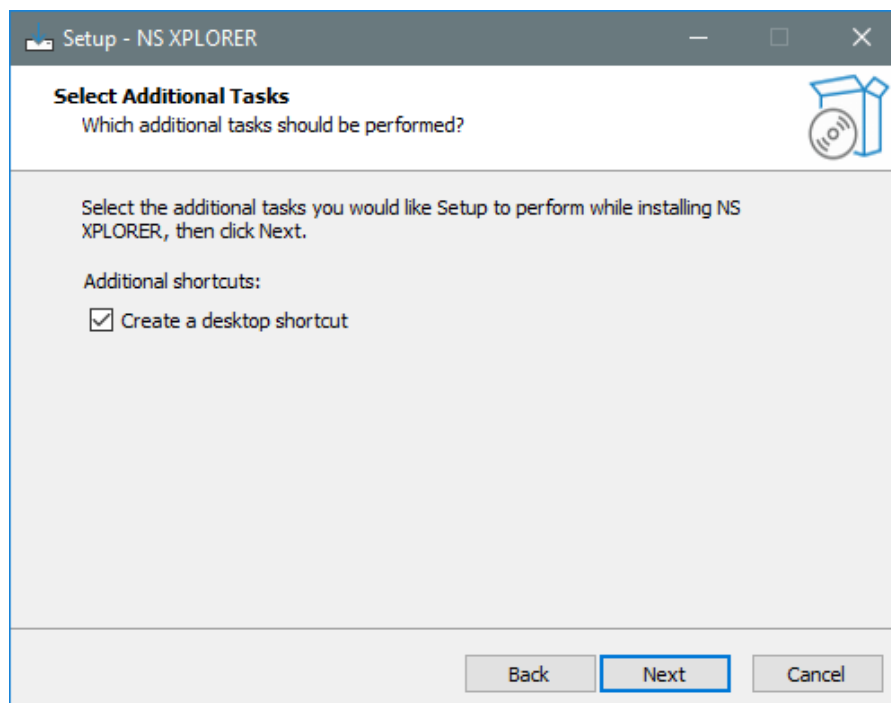


Figure 3: Create desktop shortcut

Choose the appropriate tick boxes for Smart Instrument and then select Next.

More information on Smart Manager and Smart Instrument can be found on Malvern Panalytical [website](#).

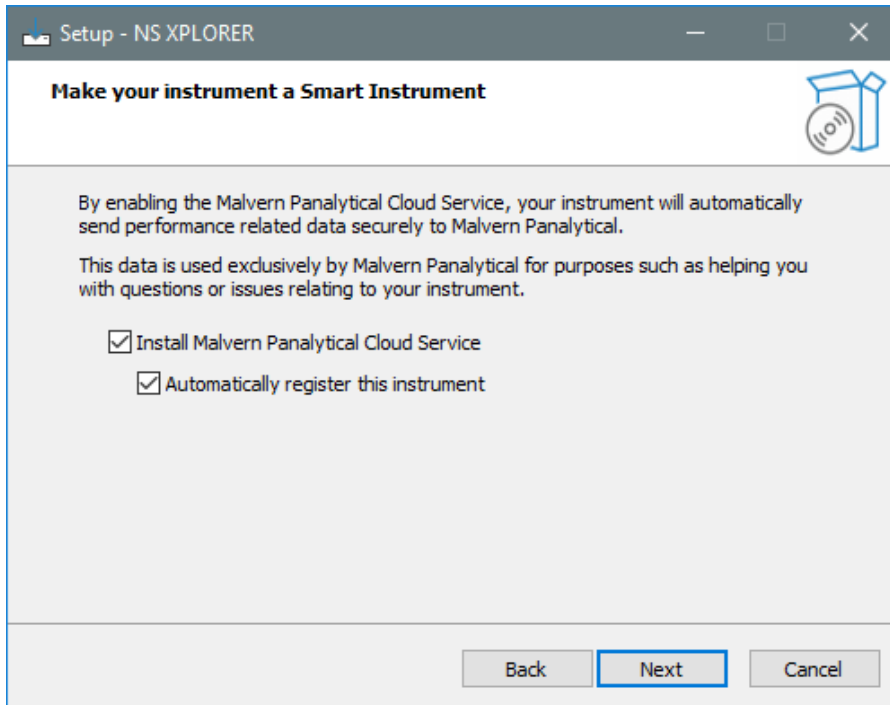


Figure 4: Install Malvern Panalytical Cloud Service

Click the install button

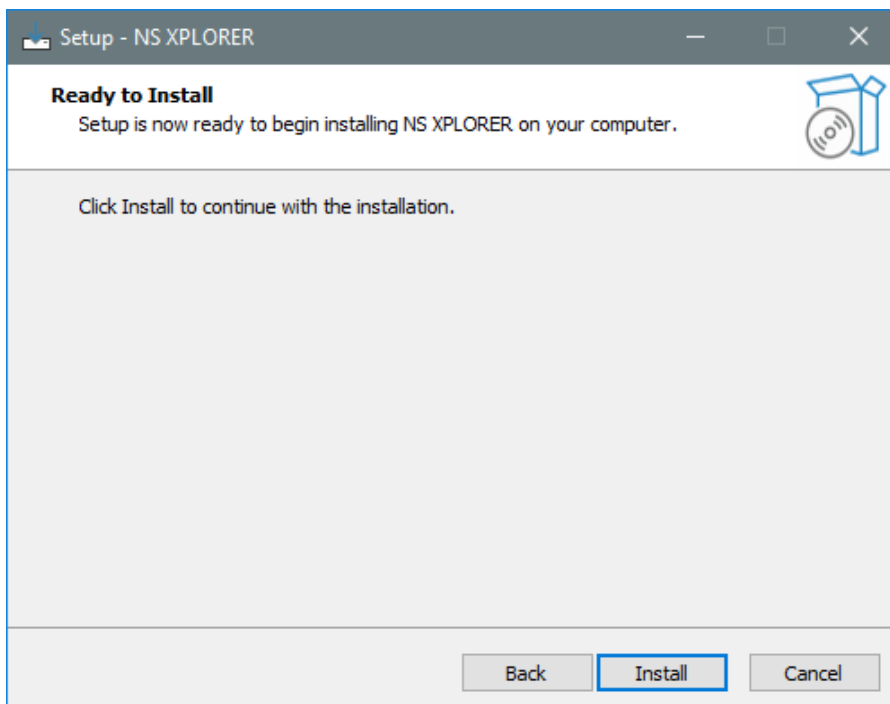


Figure 5: Ready to Install

Installation will begin

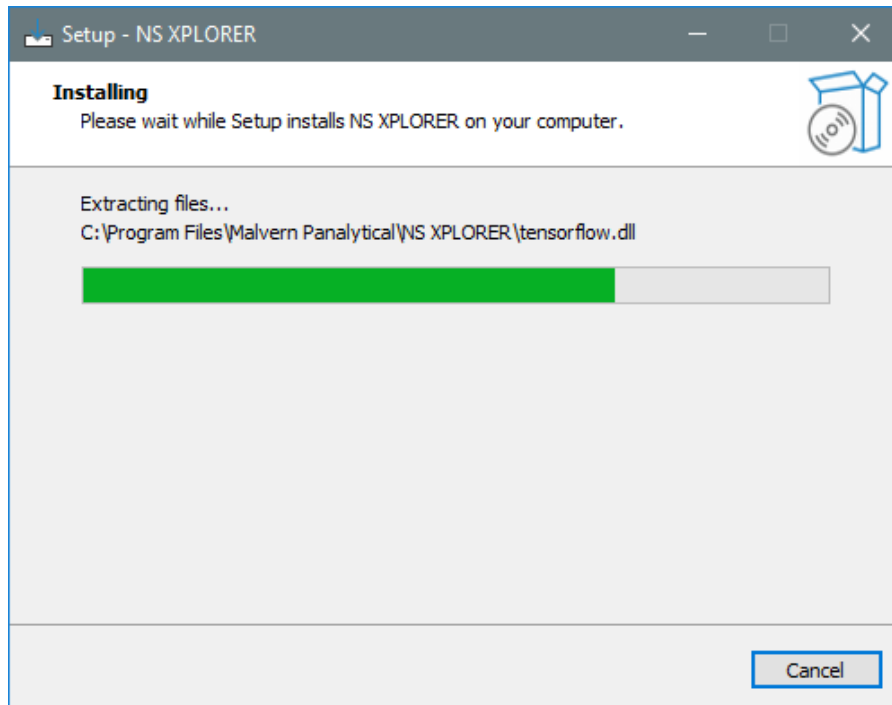


Figure 6: Installing

Select Finish and wait for your PC to Restart.

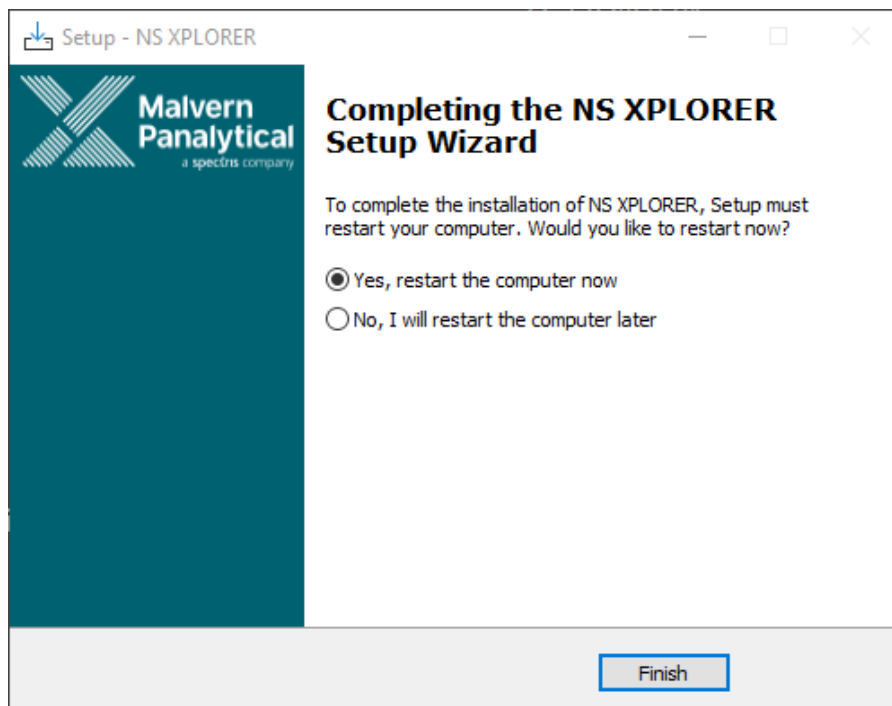


Figure 7: Completing setup

Connecting the NanoSight Pro to a PC

Connect the instrument and syringe pump to any free USB port.

Connect the camera to a free USB 3.0 port.

Note:



Once the software has been installed, connect the instrument to the PC and switch on the instrument before opening the software for the first time.

NS XPLORER software can be opened via double clicking the shortcut on the desktop.



Figure 8: NS XPLORER icon

NS XPLORER launches into the Home Screen and Hardware is detected.

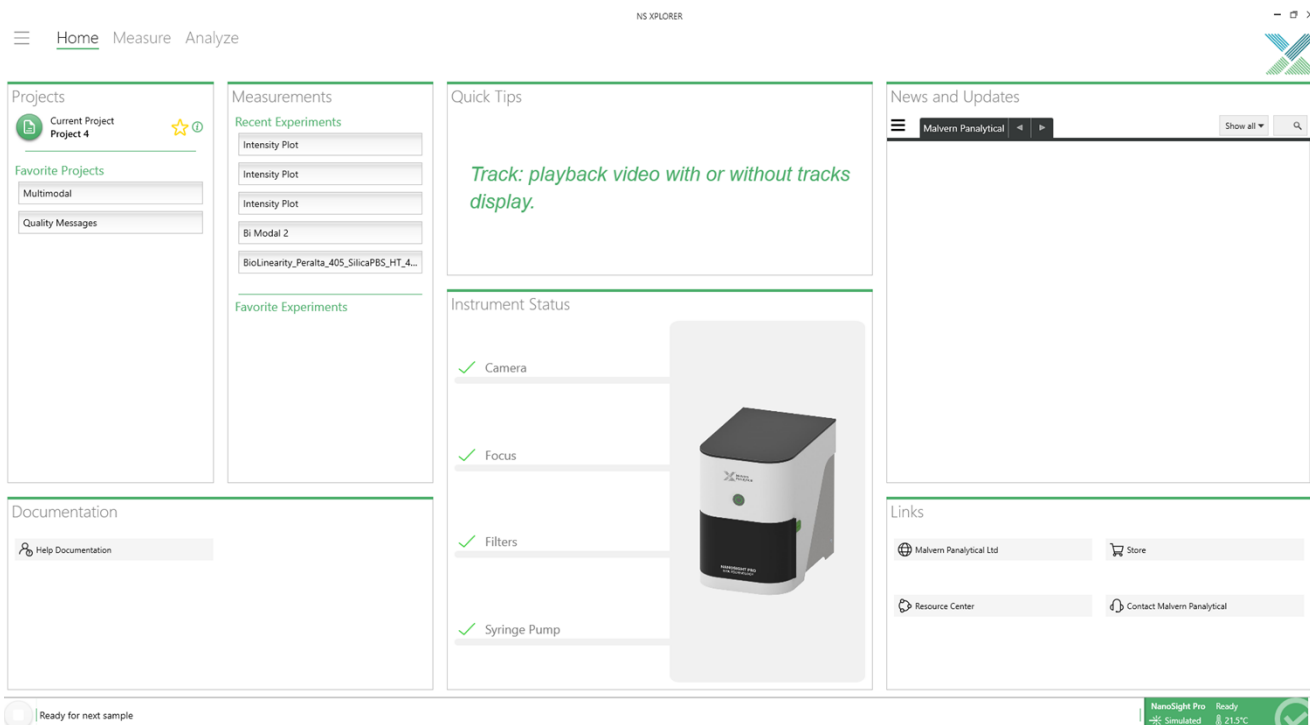


Figure 9: NS XPLORER home screen

A successful connection is indicated with an icon in the corner of the software. See Figure 10.



Figure 10: Instrument connected icon

Windows® settings configuration

For best performance it is recommended that the following changes to Windows® settings are made:

In Control Panel-> Device Manager:

- Expand Universal Serial Bus Controllers

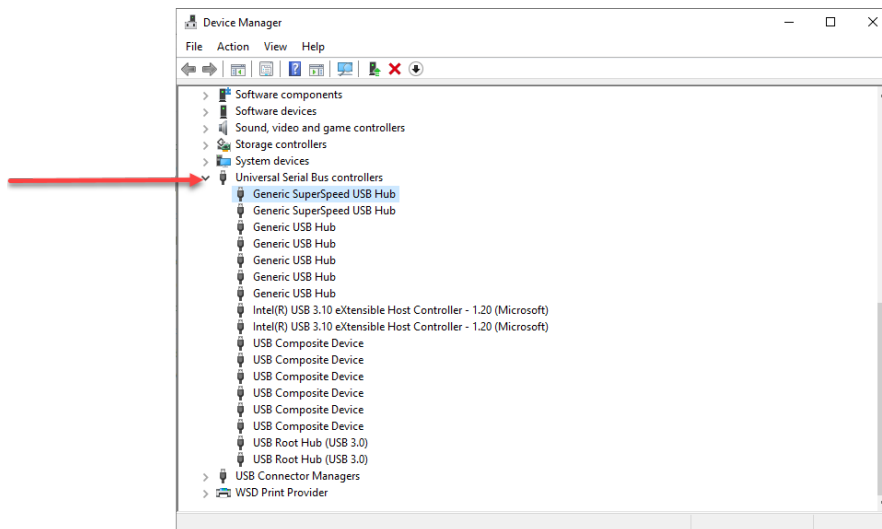


Figure 11: Device Manager

- Right-click "Generic USB Hub", click Properties

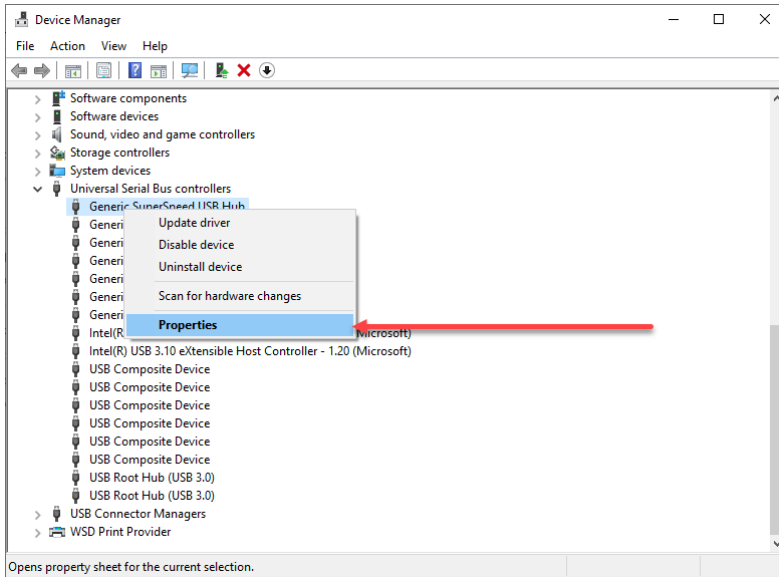


Figure 12: Device Manager Properties

- Click the Power Management tab and uncheck "Allow the computer to turn off this device to save power"

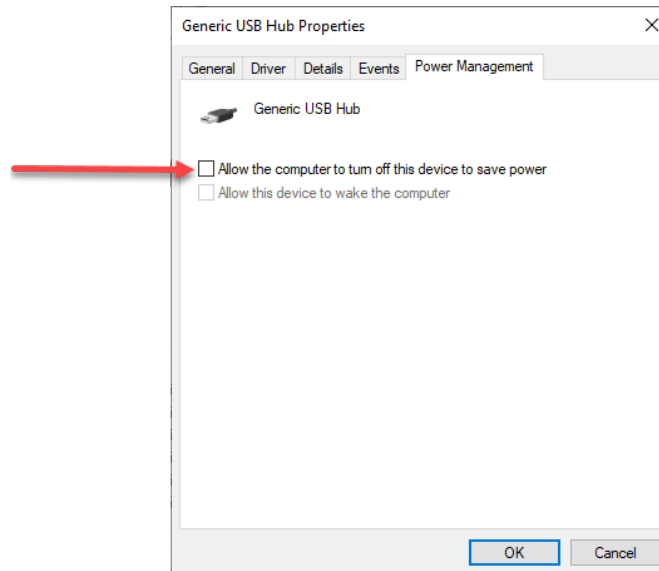


Figure 13: Device Manager Hub

- Repeat this step for all "Generic SuperSpeed USB Hub", "Generic USB Hub", "Intel® eXtensible Host Controller" and "USB Root Hub" devices.

Uninstall Procedure

The software can be uninstalled using the Programs section of the Windows® 'Control Panel'.

Known Issues

The following software bugs have been discovered within the software and will be investigated as part of a future release. Please follow the suggested work-around.

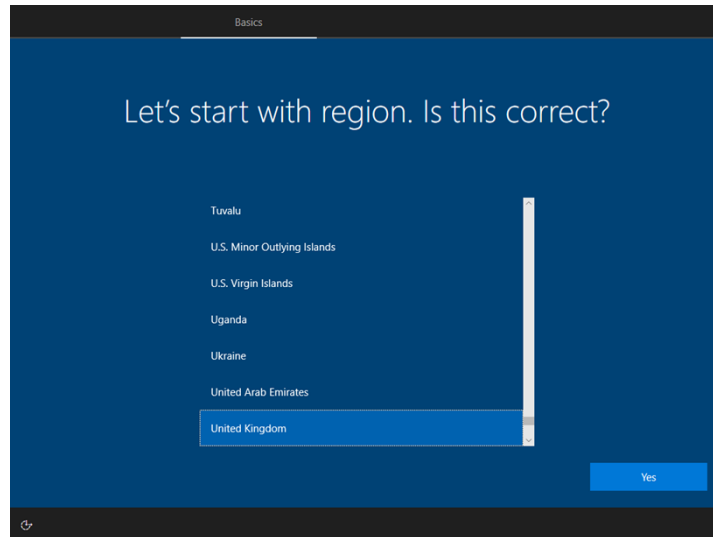
Table 2: Known issues in NS XPLOER v1.0.0 software.

Reference	Severity	Issue	Workaround
173024	3 - Medium	Naming a new Report with invalid characters	Use valid characters
185476	3 - Medium	Decrease the lower limit of exposure slide bar	Use the text box to reduce exposure further
185478	3 - Medium	Parts of the page cut off when increase zoom level	Reduce zoom
185547	3 - Medium	Single UI Measurements aborted during first video after auto-setup	Retry the measurement
187444	3 - Medium	Parts of the software can be 'clipped' by the taskbar	None
190434	3 - Medium	Fluorescence export shows incorrect filter type	Manually change the exported data for filter type
192298	3 - Medium	Properties tab closes when other properties have been removed/deleted and doesn't reset focus to remaining measurement.	Click on the remaining measurement to gain focus
192426	3 - Medium	Measurements go into wrong project if a different one is open	Move measurement back to correct project
185437	3 - Medium	Exported CSV shows "Light Scatter" for Filter column for all measurements	Manually change the exported data for filter type
197437	3 - Medium	Video tab scrolls down/up when you control focus using mouse wheel	Use the scroll bar instead of the mouse
197480	3 - Medium	Misleading 'Temperature Disconnected' message when tmp controller idles or sleeps	Continue with measurements and temperature will be 'reconnected'

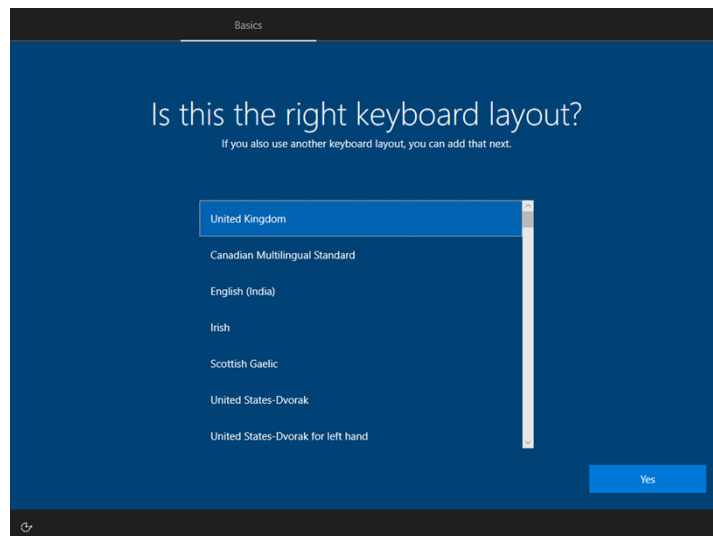
197625	3 - Medium	Opening projects is slow	None
200725	3 - Medium	Selecting to "Toggle display of data for all samples" does not change display of data	None
197904	4 - Low	Export video button disabled if pop-up dismissed	Reload the selected measurement
197475	4 - Low	If you do not approve capture settings focus changes to screen and not on camera	Click in the video to regain correct focus
189210	4 - Low	Possible lag when adding and dragging using lines to Raw data	None
195541	4 - Low	Restore default user settings always disabled	None
101823	4 - Low	'Burger menu' expansion can be slow/jittery in fullscreen	None
107699	4 - Low	Save buffer overflow does not terminate capture	Retry measurement
167672	4 - Low	Inconsistent flow message in the Data quality User Guideline	None

Appendix 1 – Windows® Installation Instructions

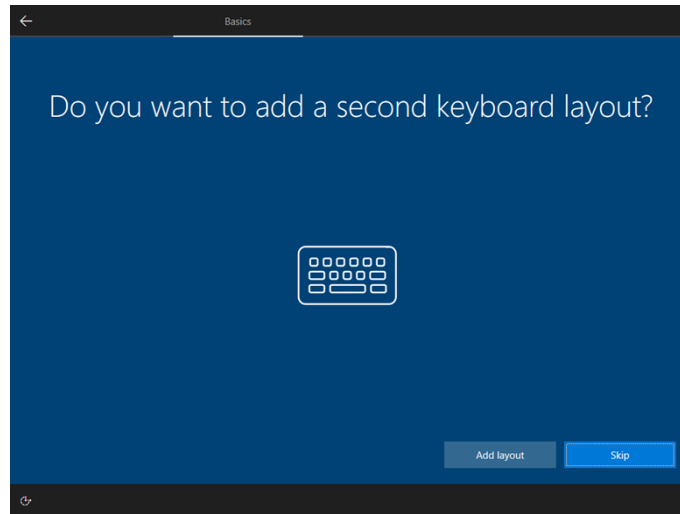
1. Select your region and click “Yes” to continue



2. Select your keyboard layout and click “Yes” to continue



3. Add a second keyboard layout if required, otherwise click **“Skip”** to continue

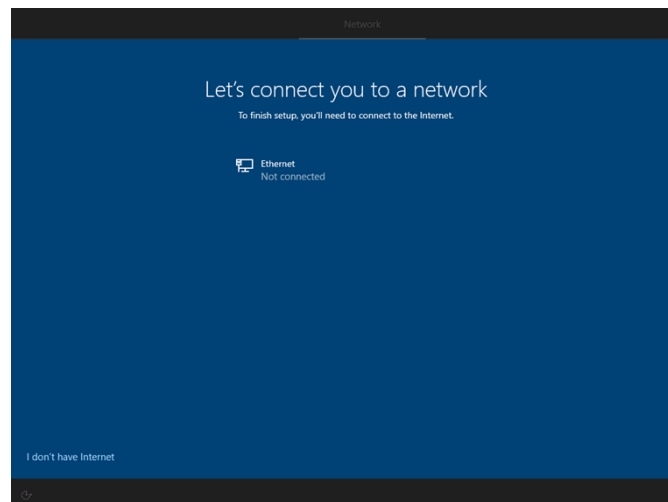


4. Unless you have a Microsoft™ account and are willing to login, it is suggested that you click **“I don't have Internet”** to continue.

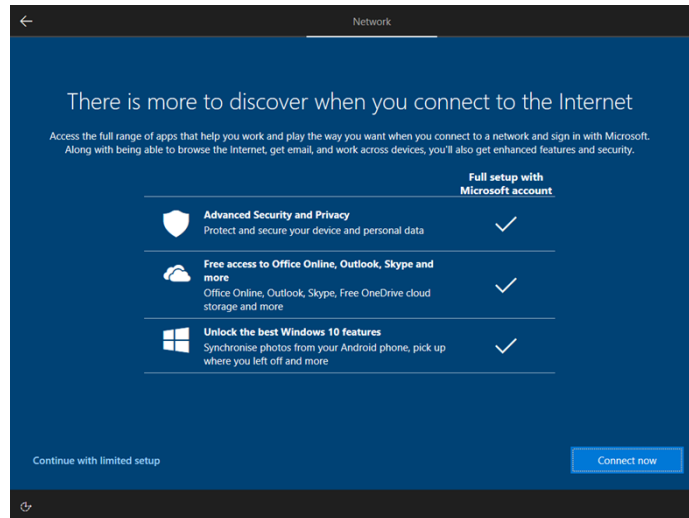
Note:



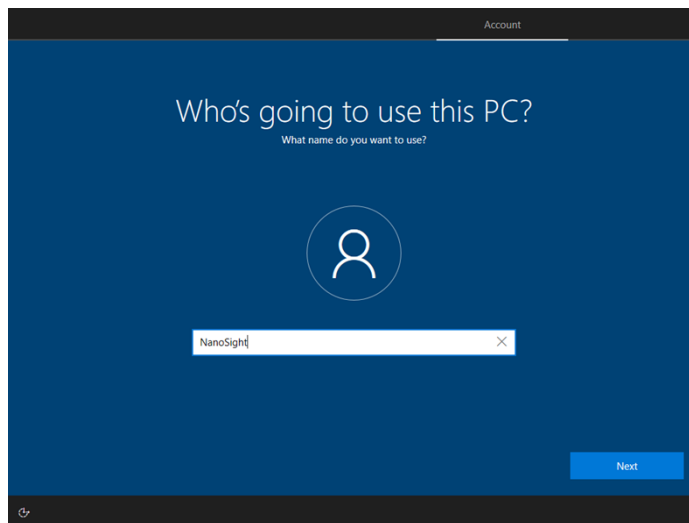
This does not stop you from connecting the PC to the internet (later on), it is only for the purposes of generating a local account as opposed to logging in via a Microsoft™ account.



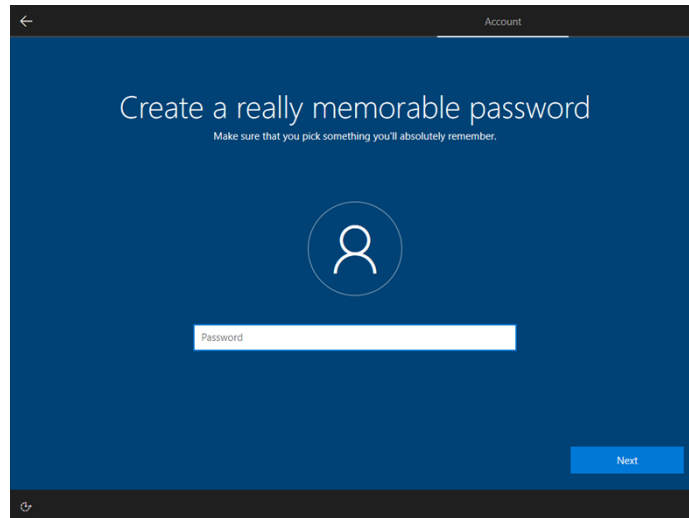
5. Click “Continue with limited setup”



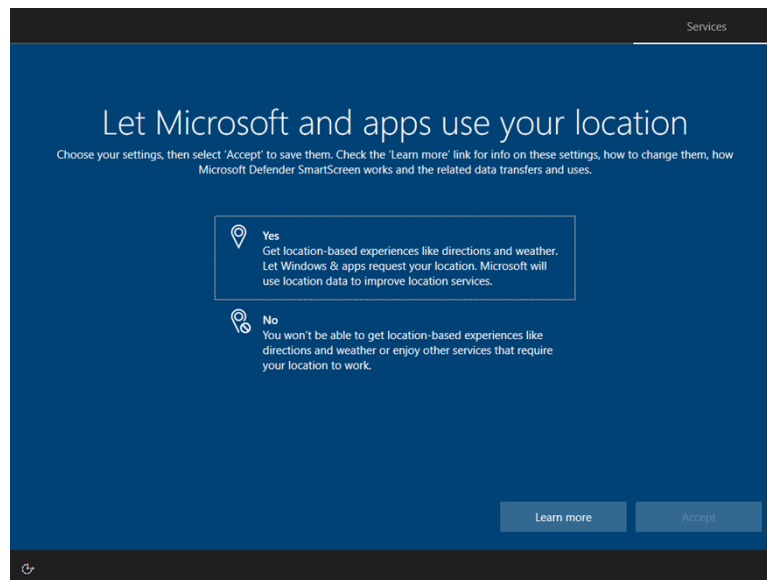
6. Enter your preferred username and click Next to continue



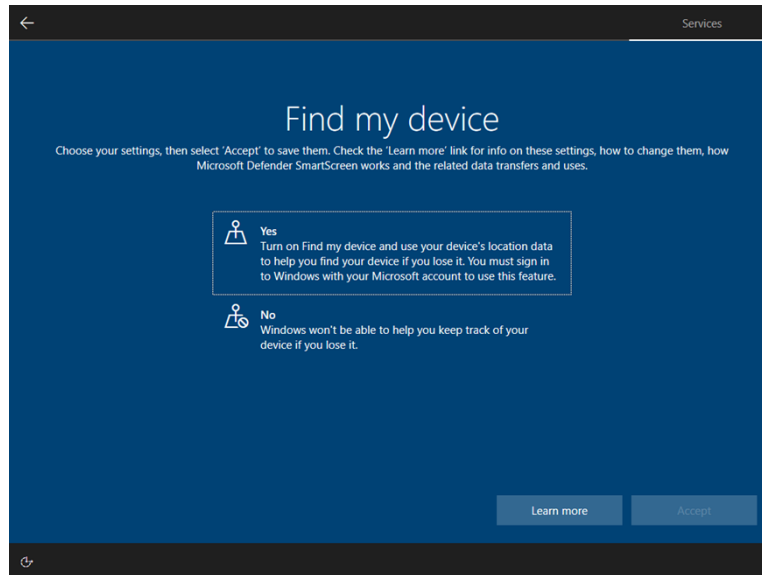
7. Choose a password or leave it blank, and click Next to continue



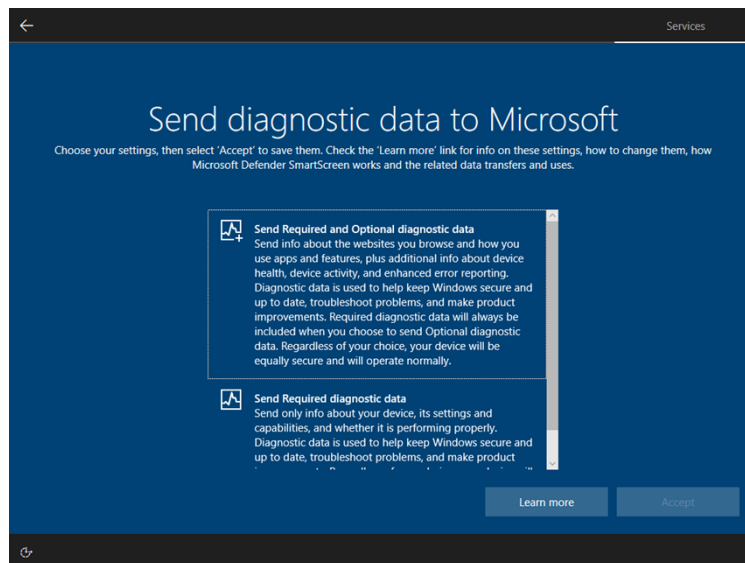
8. Decide whether to allow Microsoft™ to use your location. Click **"Accept"** to continue



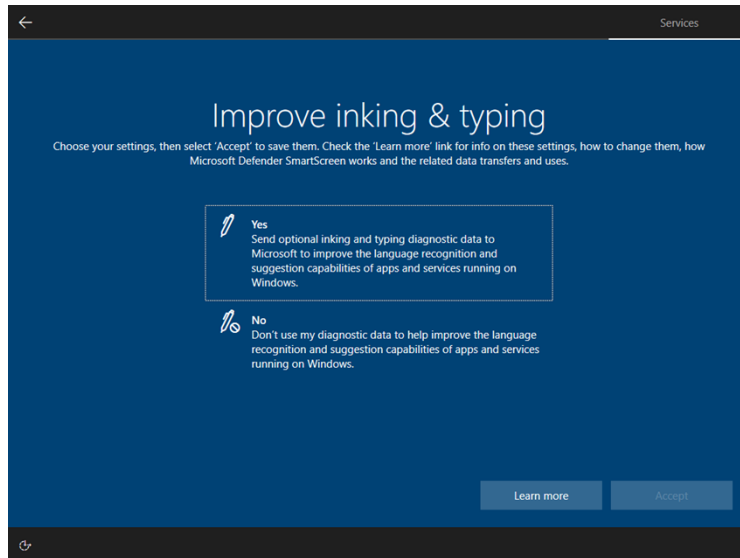
9. Choose yes or no for Find my device, click **“Accept”** to continue



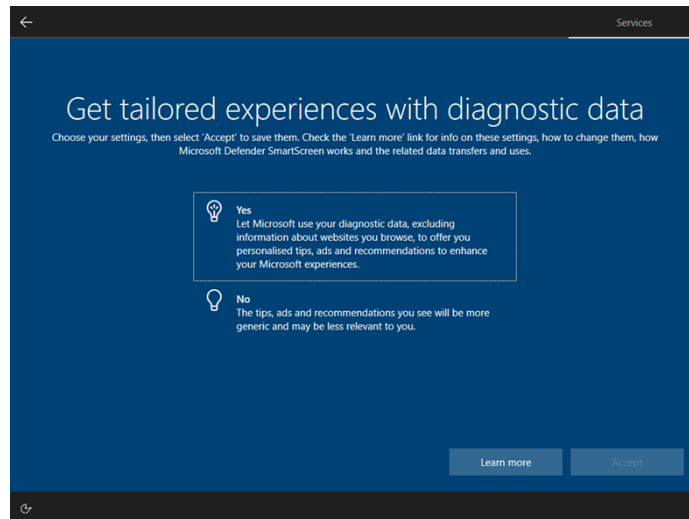
10. Choose the level of diagnostic data to send to Microsoft™. Click **“Accept”** to continue



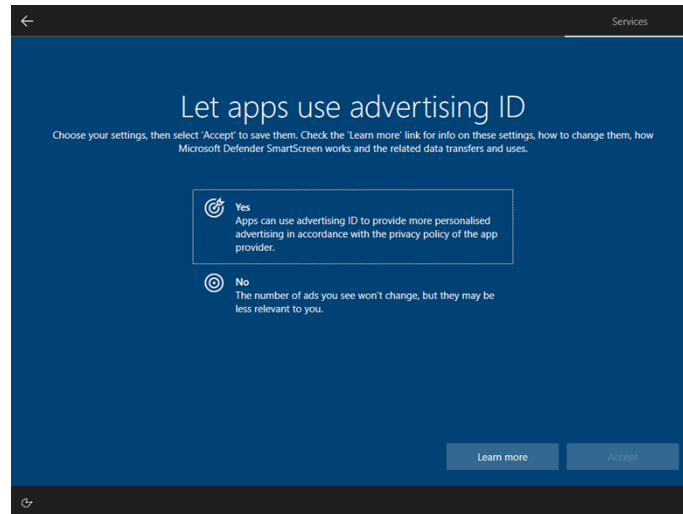
11. Select yes or no for inking and typing, click **"Accept"** to continue



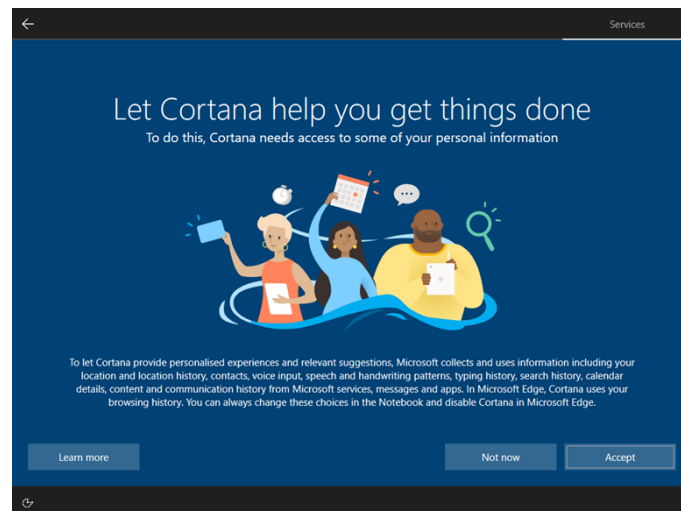
12. Choose whether to accept targeted advertising, click **"Accept"** to continue



13. Select yes or no for advertising ID, click **“Accept”** to continue



14. Setup Cortana™ if required by clicking **“Accept”**. Otherwise click **“Not now”** to finish



MALVERN PANALYTICAL

Malvern Panalytical Ltd.
Groewood Road, Malvern,
Worcestershire, WR14 1XZ,
United Kingdom

Malvern Panalytical B.V.
Lelyweg 1, 7602 EA Almelo,
The Netherlands

Tel: +44 1684 892456
Fax: +44 1684 892789

Tel: +31 546 534 444
Fax: +31 546 534 598

info@malvernpanalytical.com
www.malvernpanalytical.com

Disclaimer: Although diligent care has been used to ensure that the information in this material is accurate, nothing herein can be construed to imply any representation or warranty as to the accuracy, correctness or completeness of this information and we shall not be liable for errors contained herein or for damages in connection with the use of this material. Malvern Panalytical reserves the right to change the content in this material at any time without notice. Copyright: © 2022 Malvern Panalytical. This publication or any portion thereof may not be copied or transmitted without our express written permission.

